



2022 Single Family Recycling Guide

Directrices sobre desechos

废弃物管理政策

Инструкции по утилизации отходов

Informações de serviço de resíduos

시는 여러분의 피드백을 요청합니다



Reduce ↓

Reuse ↻

Recycle ♻️

Waste less, recycle right!

Contact us with your recycling questions!
recycle@kirklandwa.gov | (425) 587-3812



See tips and more recycling options on our website at kirklandwa.gov/recycle.

We host periodic recycling events for items with limited disposal options. Sign up for email event alerts on our website at kirklandwa.gov/recycle or follow [@KirklandEnviro](https://www.facebook.com/KirklandEnviro) on Facebook or Twitter!



Email us a photo at
recycle@kirklandwa.gov!

Follow these three steps to recycle right!

1

Recycle plastics by shape – ignore the number. We take bottles, jugs, tubs and cups.

2

Make sure your recycling is empty, clean and loose – not in a bag.

3

Keep your cart lid closed.

Accessibility

To request this in other formats or languages

Contact (425) 587-3831 or
titlevicordinator@kirklandwa.gov

Para pedir información sobre este documento en español, comuníquese con el coordinador del Título VI.

如需此文件中信息的简体中文版本, 请发送电子邮件至 titlevicordinator@kirklandwa.gov 或拨打 (425) 587-3831 联络 Title VI 协调员。

Свяжитесь с координатором раздела VI, чтобы запросить эту информацию на русском языке.

Para solicitar informações deste documento em português, entre em contato com o Coordenador do Título VI.

City policy prohibits discrimination against any person on the basis of race, color, national origin or sex in providing benefits and services.

Holiday Waste

Christmas Tree Recycling

Unflocked, undecorated Christmas trees up to 6' tall can be placed beside your cart at no cost during the first two weeks of January. Taller trees should be cut down to 6' sections.

Put out trees next to your cart on your regular service day during the weeks of January 3 or 10, 2022.

Outside of the first two weeks of January, you can cut trees to 3' segments and put fully inside your yard waste cart.

Gift Cleanup

Recycle wrapping paper unless it has glitter or foil.

Reuse bows, ribbons, gift bags and tissue paper, or throw away.



No changes to accepted item list

ITEMS SHOULD BE LOOSE



Don't bag recycling

ITEMS MUST BE CLEAN



No dirty items

Plastic Bottles *Botellas de plástico*

Screw lids back on empty plastic bottles.



Recycle plastics by shape — only bottles, jugs, tubs and cups can be recycled.

Throw away all other plastic — even if it has a "recycle symbol!"

Plastic Tub + Cups *Contenedores de plástico*

Throw out snap-on lids.



Plastic Jugs *Jarras de plástico*

This is too dirty to recycle!



Wash out food + liquid containers before recycling. Throw away dirty items.

Paper + Cardboard | *Papel y cartón*



Metal Cans + Scrap Metal | *Aluminio y latas*

Larger than 3", under 2'x2', less than 35lbs. No sharp or greasy parts. No wood, plastic or rubber (pot handles OK).



Glass Bottles + Jars *Frascas y botellas de vidrio*



Metal Lids | *Tapas de metal*



Metal lids that are 3 inches wide or larger can be recycled loose. Throw away smaller metal lids and caps.

Screw back on plastic bottle and jug lids. Throw away loose plastic lids.



Yard Waste | *Plantas, flores y desechos de jardín*

Up to 4' long and 4" diameter.

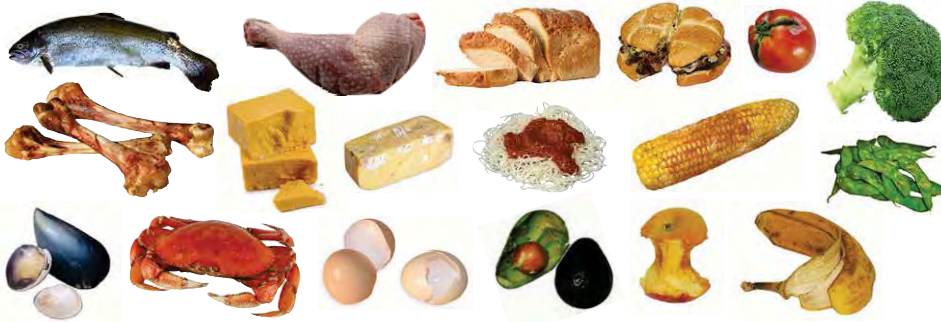


untreated
no paint or stain
remove nails



Food Scraps | *Alimentos*

Remove and throw away stickers, rubber bands and ties.



Composting is great when you have food that's gone bad – but not wasting food in the first place is even better! Get tips to help you waste less food at recyclefood.org.

Food-Soiled Paper | *Papeles con manchas de comida*



no plastic
pizza savers



no shiny
coating



Compostable Bags | *Bolsas compostables*



Bags must be labeled compostable – biodegradable is not the same.

Only brands listed on Cedar Grove's website (cedar-grove.com) are accepted.

Don't put these in your food+yard cart



No plastic bags
No bolsas de plástico



No Styrofoam™
No poliestireno



No glass
No vidrio



No plastic
No plástico

Garbage | Basura



Throw out all items not accepted in recycling or food+yard waste carts, except hazardous waste.

PLEASE BAG GARBAGE

Some items can be recycled through drop-off programs. See *What Do I Do With* page.

Wrappers, Food Packaging + Dirty Items

Recipientes y cajas de comida



Plastic Bags + Overwrap

Bolsas plásticas



Styrofoam™

Espuma de poliestireno



Utensils, Straws + Lids

Utensilios de plástico y pajitas



Other Plastic

Otros artículos de plástico



Hygiene + Pet Waste

Pañales y excrementos de mascotas



Sharp Items

Agudo



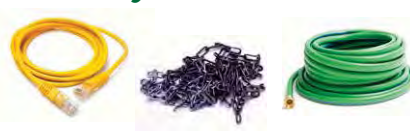
Other

Otros productos



Cords + Chains

Cables y cadenas



Hazardous Waste



Bring hazardous waste at no cost to: Factoria Household Hazardous Waste

13800 SE 32nd St, Bellevue
Tue-Fri, 8-4, Sat-Sun, 9-5
No appointment needed.

kingcountyhazwastewa.gov
haz.waste@kingcounty.gov
(206) 296-4692

Safely dispose of hazardous waste for no cost at the Factoria Household Hazardous Waste Drop-Off site. Common items are pictured below — visit their website for all accepted materials.

Auto Products



Motor oil, oil filters, antifreeze, auto fluids

Fuel



Gasoline, propane and butane tanks, kerosene

Fire Extinguishers



full or partially full

Batteries



Fluorescent Lights



See lightrecycle.org for more drop-off locations for fluorescent lights

Cleaners



Weed/Bug Killer



Is it hazardous?

Some common items are pictured above. You can also check the label for these words or symbols:



Some items may pose a safety hazard but require special treatment. Do not bring asbestos, explosives, or medical sharps to hazardous waste facilities.

Paint Recycling

Drop off unwanted latex and oil-based paint, stains and finishes for recycling, at no cost.

Find drop-off locations at paintcare.org/WA.

Learn about proper paint cleanup at kirklandwa.gov/paint.



Sharps

Do not recycle sharps. Package sharps appropriately in a sharps container or 2-liter soda bottle and take to the Factoria Transfer Station or a secure drop box. As a last resort, the secured soda bottle of sharps may be thrown away in the garbage.

More information at kingcounty.gov/sharps.



Prescription Medicine

Find secure disposal drop boxes at med-project.org.

