



City of Kirkland

Multifamily Service Guide | 2023

Guía de servicios multifamiliares | 多户服务指南 | Руководство по обслуживанию многоквартирных домов | Guia de serviço multifamiliar | 다가구 서비스 안내



Recycle *Reciclaje*



What's new?
No plant pots, lid rules

DO NOT BAG RECYCLING



No plastic bags
No bolsas de plástico

ITEMS MUST BE CLEAN + EMPTY



No dirty items
Asegúrate que todos los materiales reciclables estén vacíos y limpios

Plastic Bottles *Botellas de plástico*



Empty

Screw caps back on empty plastic bottles

Recycle plastics by shape—only **bottles, jugs, tubs and cups** can be recycled.
Throw away all other plastic—even if it has a “recycle symbol!”

Plastic Tubs + Cups *Contenedores de plástico*



Plastic Jugs *Jarras de plástico*



This is too dirty to recycle!
Wash out food & liquid containers before recycling. Throw away dirty items.

Paper + Cardboard *Papel y cartón*



No cap

Metal Cans + Scrap Metal *Latas de metal y chatarra*

Larger than 3", under 2'x2', less than 35lbs. No sharp or greasy parts. No wood, plastic or rubber (pot handles OK).



Empty

Glass Bottles + Jars *Frascos y botellas de vidrio*



Lids *Tapas*



Metal lids that are 3 inches wide or larger can be recycled loose.

Throw away smaller metal lids and caps. Screw back on plastic bottle caps and jug lids. Snap on tub lids. Throw away loose plastic lids.



Garbage *Basura*



Throw out all items not accepted in recycling or compost waste carts, except hazardous waste (see *Hazardous Waste* page).

Some items, noted, can be recycled through drop-off programs. See *Recycling Beyond the Cart* page.

Wrappers, Food Packaging + Dirty Items

Recipientes y cajas de comida



Recycling Beyond the Cart (see page 6)



Drop-off recycling available

Utensils, Straws + Small Items

Utensilios de plástico y pajitas



Screw plastic bottle caps back on to recycle

Other Plastic

Otros artículos de plástico



Diapers, Wipes + Pet Waste

Pañales y excrementos de mascotas



No disposable wipes are flushable!

Kitty litter (double bag)

Sharp Items

Objetos afilados



Other *Otros productos*

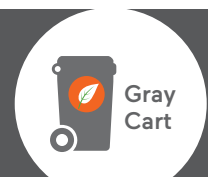


Cool ashes (double bag)

Cords + Chains *Cables y cadenas*

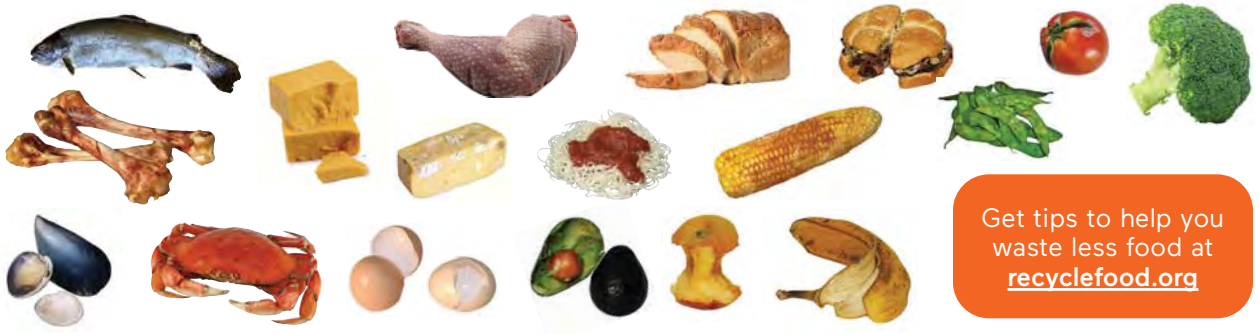


Compost Compost



Food Scraps *Restos de comida*

Remove and throw away stickers, rubber bands and ties.



Get tips to help you waste less food at recyclefood.org

Food-Soiled Paper *Papeles con manchas de comida*



No plastic
pizza savers

No shiny
coating

No plastic in your gray cart

No plastic
bags
Sin bolsas
de plástico



Bags must
be compostable
Las bolsas deben
ser compostables

Don't have a food scrap cart?

Get free food scrap collection at your apartment or condo:

- ▶ Qualifying properties can receive free food scrap collection service.
- ▶ We can help your property take any steps needed to participate. Property manager or HOA approval is required.
- ▶ To get started, complete our form at kirklandwa.gov/mffoodrequest.

Composting won't work at your complex? Drop off your food scraps.

Place food scraps in the gray carts at our public drop-off locations:

- ▶ Kirkland City Hall (123 5th Ave) loading bay by south entrance
- ▶ North Kirkland Community Center (12421 103rd Ave NE) back parking lot

Follow guidelines above. More info at: kirklandwa.gov/compostdrop.



Get tips to help you waste less food at recyclefood.org.

Hazardous Waste



Drop-off at Factoria Household Hazardous Waste Facility

Safely dispose of hazardous waste for no cost. Visit their website for all accepted materials.

13800 SE 32nd St, Bellevue
Tue-Fri 8-4 | Sat-Sun 9-5
No appointment needed.

kingcountyhazwastewa.gov
haz.waste@kingcounty.gov
(206) 296-4692

Auto Products



Motor oil, oil filters, antifreeze, auto fluids

Fuel



Gasoline, propane and butane tanks, kerosene

Oil-Based Paint + Solvents



Oil-based paint, paint thinner, stains, polish, varnish, solvents, spray paint

Batteries + Fluorescents



Cleaners



Weed/Bug Killer



Is it hazardous?

You can also check the label for these words or symbols:



Do Not Bring

Do not bring asbestos, explosives, or medical sharps to hazardous waste facilities.

Latex Paint Recycling

Drop off latex paint, water-based stains and clear finishes for recycling, for a small fee.

Find locations at: kingcounty.gov/takeitback.



Latex Paint Disposal

Stir kitty litter into latex paint to dry it out, then throw it away.

Learn about proper paint cleanup at kirklandwa.gov/paint.

Statewide Paint Recycling



This statewide program will offer more drop-off locations and accept both latex and oil-based paint for recycling.

A small fee will be charged for recycling. Visit paintcare.org/WA to learn more.

Recycling Beyond the Cart



Electronics

Recycle large TVs, computers, and laptops with E-Cycle Washington. Locations: ecyclewashington.org.



Styrofoam™

Bring to Styrofoam™ recycling events. See kirklandwa.gov/styrofoam.



Plastic Bags + Wrap

Bundle clean plastic bags, plastic film and wrap, and return to grocery stores. More info at plasticfilmrecycling.org.



Confidential Papers + Shredding

Home shredding is not accepted in your recycle or compost carts. Shred at a free shredding event instead. For more information, visit: kirklandwa.gov/recycle.



Prescription Medicine

Find secure disposal drop boxes at med-project.org/washington.



Cooking Oil

Recycle used cooking oil in the tank at the North Kirkland Community Center. Please take your oil container home with you. Do not leave it behind.



Clothing + Textiles

Drop off textiles at Houghton Transfer Station's recycling area.



Goodwill accepts textiles for recycling. More options at kingcounty.gov/threadcycle.

Recycle Electronics

Televisions, Computers + Tablets

Recycle computers, tablets, e-readers, monitors, TVs and laptops through E-Cycle Washington (ecyclewa.org). In Kirkland, drop off at Goodwill.



Consider selling or giving away electronics that still work! Reusing an item saves about 20 times as much energy as recycling it.

Cell Phones

Recycle cell phones at Goodwill. Find more options at call2recycle.org.



Other Electronics

Electronic equipment can be recycled at our Recycling Collection Events. Find more options at takeitbacknetwork.org.



Textile Drop-off Bins

Clothing + Textiles

This program offers large multifamily properties on-site textile collection.

The containers can be located conveniently inside a common indoor space where residents can drop off textiles for donation and recycling.

Once the container is full, the property manager simply calls WM to schedule collection.

Email recylnw@wm.com to learn more about the ReTRN textile recycling carts.



Christmas Tree Recycling

WM collects Christmas trees from your apartment or condo for no charge during the first two weeks of January.

- ▶ Place your Christmas tree next to your garbage dumpster.
- ▶ No taller than 6 feet tall. Taller trees must be cut in 4 feet or shorter segments.
- ▶ Unflocked and undecorated.

Pick-ups are made twice a week. To find your pick-up day, visit kirklandwa.gov/recycle.



Need more room to recycle?

Is your recycling always overflowing?

Extra recycling is available at no additional cost.

Contact the Kirkland Recycling Hotline at (425) 587-3812 or recycle@kirklandwa.gov to add recycling capacity at your complex.

Could your complex use a hand with recycling?

Ask your HOA or property manager to contact us for recycling education and resources for residents. See all resources available at kirklandwa.gov/mftoolkit.



Got recycling questions?



Ask us!

Email recycle@kirklandwa.gov
or call (425) 587-3812.

Check our website at kirklandwa.gov/recycle or
use King County's recycling and waste disposal
directory at kingcounty.gov/whatdoidowith.



Email us a photo!

Languages

To request this in other formats or languages contact (425) 587-3831 or titlevicoordinator@kirklandwa.gov

Para pedir información sobre este documento en español, comuníquese con el coordinador del Título VI.

如需此文件中信息的简体中文版本,请发送电子邮件至 titlevicoordinator@kirklandwa.gov 或拨打 (425) 587-3831 联络 Title VI 协调员。

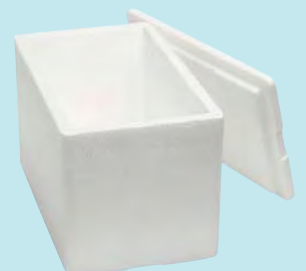
Свяжитесь с координатором раздела VI, чтобы запросить эту информацию на русском языке.

Para solicitar informações deste documento em português, entre em contato com o Coordenador do Título VI.

City policy prohibits discrimination against any person on the basis of race, color, national origin or sex in providing benefits and services.

Recycling Events

These items are recyclable, but not in your cart.
Visit kirklandwa.gov/recycle to see
upcoming events and sign
up for email event
reminders.



WM Customer Service

(425) 587-0040

Mon-Fri 7-7 | Sat 9-1

Información en español

wmnorthwest.com/kirkland

Recycling Questions

Kirkland Recycling Hotline

(425) 587-3812

recycle@kirklandwa.gov

kirklandwa.gov/recycle



Additional Information

Scan for Kirkland
Trash, Recycling, and
Compost Resources

What's inside?

- ▶ Recycle, garbage, + compost guides
- ▶ Drop-off recycling
- ▶ Hazardous waste
- ▶ Christmas tree recycling
- ▶ Recycling Beyond the Cart



WM

7227 NE 55TH Avenue
Portland, OR 97218-1215

