

# CURBSIDE RECYCLING GUIDE

Empty, rinse and place these loose items in your recycling cart. Only recycle the items listed.



Plastic Bottles & Containers



Paper



Food & Beverage Cans



Flattened Cardboard & Paperboard



Glass Bottles & Containers

**Extra Recycling:** There is an additional charge for each extra bag or container (32-gallon, 55 lb. limit) that doesn't fit in your container with the lid closed. Please see the website for additional fees based on commodity.

# GARBAGE GUIDE

Charges are based on container size.

Place all carts on the road at least two feet apart and three feet from cars, tree and other objects.

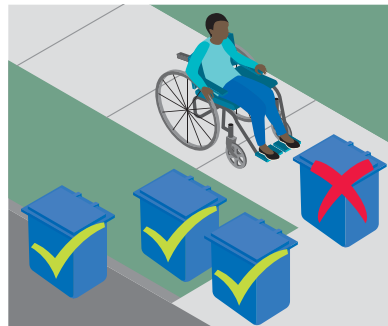
(Rates: [wmnorthwest.com/lakestevens](http://wmnorthwest.com/lakestevens))

Please bag all garbage.

Visit [wmnorthwest.com/lakestevens](http://wmnorthwest.com/lakestevens) or call 1-800-592-9995

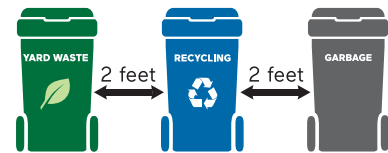
(M-F 7am-7pm, Sat 9am-1pm) for:

- Missed Collection or damaged carts
- Collected rates or service subscription
- Disabled veteran discount and disabled service
- Construction/demolition containers (remodeling, etc)



**Cart Placement** Please make sure your cart does not block the sidewalk on service day.

Carts can be placed in these three approved locations (as space allows).



# YARD + FOOD WASTE GUIDE

All of these materials can go in your green yard and food waste cart.



Food Scraps



Yard Trimmings

Yard and food waste collection is available by subscription. Call 1-800-592-9995 to sign up.



Food-Soiled Paper

## KEEP OUT of Your Yard + Food Waste

- ✘ NO plastic bags
- ✘ NO glass or metal
- ✘ NO service ware advertised as "compostable" or "biodegradable"
- ✘ NO liquids, fat, oil or grease
- ✘ NO pet waste

## Yard + Food Waste Tips

- Use a collection method that works for you – reusable container with a lid, paper grocery bag, compostable bag.
- Empty your container into yard and food cart frequently.
- Layer food scraps with yard waste and newspaper to absorb liquids.
- Not all bags labeled "compostable" actually break down at our local facility.

## RESOURCES

**Snohomish County Solid Waste**  
425-388-3425

**1-800-RECYCLE** (732-9253)  
1800recycle.wa.gov/  
Online information to help you dispose of materials properly.

**Household Hazardous Waste**  
[www.snoco.org](http://www.snoco.org)



## INCLEMENT WEATHER GUIDE

If weather conditions prevent safe collection, up to twice as much material will be collected at no extra charge on your next regular collection day for each container not emptied. No credit for collection delayed due to weather. Updates: [servicealerts.wmnorthwest.com/lakestevens/](http://servicealerts.wmnorthwest.com/lakestevens/)

# DO MORE WITH MY WM

WM is committed to finding ways to make your service more efficient, effective and effortless to manage. Please create your My WM profile by visiting [wm.com](http://wm.com).

Easily view your collection schedule and stay informed of Service Alerts and schedule changes.

Receive real-time notifications and view images so you are always in the know.

Manage your billing by viewing payment history, changing your payment method or enrolling in AutoPay and Paperless billing.

Download the My WM mobile app to have your service and account information at your fingertips.



# THINK OUTSIDE THE CART

**REDUCE AND REUSE BEFORE YOU RECYCLE.** Waste prevention is our biggest opportunity to reduce the consumption of natural resources.



**PREVENT FOOD WASTE – BUY ONLY WHAT YOU NEED**  
When grocery shopping, be thoughtful. Make a list and buy only what you need to minimize any food waste. Visit [wmnorthwest.com](http://wmnorthwest.com) for more food waste reduction tips.



**BUY NOTHING**  
Instead of buying items you will use infrequently, consider borrowing or renting. Borrow from a neighbor or social media site.



**SHARE, SWAP OR SELL**  
Sell items you no longer want and find bargains at consignment shops, garage sales, thrift stores, online exchanges and auctions.



**CHOOSE TO REUSE**  
Use reusable mugs, water bottles, utensils and bags. Store these in your car or at your desk so you will always be prepared.

Before you buy, use or discard an item, ask yourself:  
**REDUCE:** Can I get this item used or with less packaging?  
**REUSE:** Can I, or someone else, use this item again?  
**RECYCLE:** Can I recycle this item after I use it?  
**BUY RECYCLED:** Can I buy this item with recycled content?



7227 NE 55th Avenue  
Portland, OR 97218-1215

1-800-592-9995

(M-F 7AM-7PM, SAT 9AM-1PM)

Multi-language materials available

[wmnorthwest.com/lakestevens](http://wmnorthwest.com/lakestevens)

Información en español

Online Billing: [www.wm.com/myaccount](http://www.wm.com/myaccount)

### Billing Information

You may pay your bill online at [www.wm.com/pay-my-bill](http://www.wm.com/pay-my-bill) or sign up for paperless billing at no cost. Watch for more information when you receive your customer ID number on your WM invoice.

#290\_Lake Stevens Guide\_Even\_2023

# City of Lake Stevens

Recycling Collection Guide 2023

