

Other WM Services

Seattle's Clear Alleys Program (CAP)

This program replaces dumpsters, creating cleaner, safer alleys!
Waste Management is the service provider for CAP in the Pioneer Square, International District and Columbia City neighborhoods.

How it works:
In the Pioneer Square, International District, and Columbia City neighborhoods, specially marked plastic bags of garbage and recycling are set out in alleys. WM collects bags at least twice per day, seven days a week. Businesses with available designated inside storage do not need to participate in this program.

To learn more or to order bags
visit: wmnorthwest.com/seattlecap



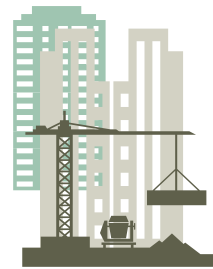
Commercial Construction & Demolition Debris Services

Waste Management is the City of Seattle's contracted hauler for non-recyclable construction waste. The City of Seattle has specific recycling and disposal requirements for construction, remodeling and demolition activities within the city. Learn more at: seattle.gov/utilities/construction-resources/collection-and-disposal/construction-and-demolition

Waste Management Service Offerings

- **Diversion and Recycling Tracking Program (DART):** for all LEED or Green Build construction projects.
- **C&D Recycling:** through our network of Material Recovery Facilities, we can help you find easy, cost-effective ways to divert more materials from landfills.

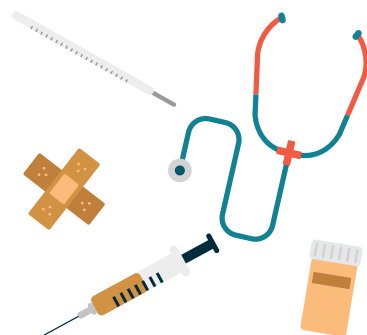
For more information contact Waste Management's Builders Direct: **1-800-963-4050**



MedWaste & Pharmaceutical Waste Pick-up Service

Waste Management handles your waste with a reliable and environmentally responsible program using easy-to-use Department of Transportation (DOT) certified containers with attached lids and **no monthly inactivity fees**—our service is hassle-free!

To request more information, call today or email Waste Management's Healthcare Solutions specialists at **1-855-427-1999 ext. 2** or healthcarewastenw@wm.com.



Waste Management, 7227 NE 55th Avenue, Portland, OR 97218-1215
www.wmnorthwest.com/seattle
Información en Español: **1-855-894-9447**
Online Billing: www.wm.com/pay-my-bill



2021

Business Recycling Resource Guide for Seattle



www.wmnorthwest.com/seattle • 1-855-894-9447



All items must be empty, clean, and loose.

CLEAN PAPER & CARDBOARD



Packaging **MUST BE CLEAN** to be Recyclable



CLEAN PLASTICS

0' 1' 2' 3'



CLEAN METAL & GLASS



SCRAP METAL

(less than 2' x 2' x 2')



No plastic bags.

ALL FOOD WASTE



SOILED FOOD PAPER (without shiny coating)



PACKAGING & BAGS LABELED COMPOSTABLE



YARD WASTE, PLANTS, UNTREATED WOOD



Waste Prevention Resources

Want to Set Up a Successful Recycling and Composting Program? We're here to help!

Contact a Waste Management Multilingual Recycling Specialist at recyclenw@wm.com for:

- **FREE** site visits and waste sort
- **FREE** recycling and composting posters and container labels
- **FREE** advice on what to recycle and compost
- **FREE** virtual or in person assistance
- **FREE** presentations on waste reduction, recycling and compost collection
- **FREE** consultation on recommended service level to increase diversion and save money!



Recycle right. For more information, visit: wmnorthwest.com/Seattle



Seattle Requirements and Programs

Seattle's Recycling and Compost Requirements



Seattle Municipal Code (SMC) sections 21.31.082 and 21.36.083 prohibit food scraps, compostable paper, yard waste and recyclables from going in the garbage.

Seattle's Green Business Program



The Seattle Public Utilities EnviroStars business recognition program offers free tools and assistance to help Seattle area businesses conserve resources and prevent pollution.

Beyond the Bin—Hazardous Waste



Hazardous material needs to be handled separately from regular garbage, recycling and compost. If you see DANGER, POISON, CAUTION or WARNING on the label, the product is hazardous.

Visit hazwastehelp.org or call 206-263-8899 to learn how your business can safely manage its hazardous waste.

Learn more about Seattle's Recycling and Compost requirements and their Green Business Program here: seattle.gov/utilities/greenvourbusiness

How to Contact Us

Please note our **SEATTLE SPECIFIC NUMBER!**

Phone: Waste Management Customer Service 1-855-894-9447

Phone service available on Monday-Friday from 7am-7pm, or on Saturday from 9am-1pm

Online: www.wmnorthwest.com/seattle

Please call or visit our website to:

- Sign up for service or change your service level
- Report a missed collection
- Order CAP bags
- Pay your bill
- View inclement weather or holiday collection schedules



**Clean Recyclables
No Food. No Liquid. No Single Plastic Bags.**

**COMMERCIAL RECYCLING REQUIREMENTS—
it's prohibited to put recyclables in the garbage.**
(Seattle Municipal Code sections 21.36.082 and 21.36.083)

**No Plastic. No Glass. No Metal. No Plastic Bags.
No Animal Waste. No Rocks.**

**COMMERCIAL COMPOSTING REQUIREMENTS—it's prohibited to
put food scraps, compostable paper and yard waste in the garbage.**
(Seattle Municipal Code sections 21.36.082 and 21.36.083)