

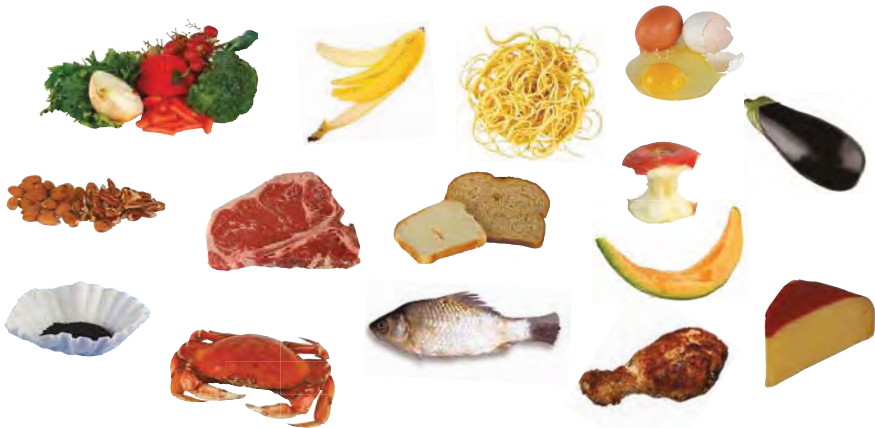
COMPOST

These items go in your compost cart.



NO PLASTIC, COOKING OIL, PET WASTE, GLASS, METAL OR LIQUIDS

FOOD SCRAPS AND LEFTOVERS



UNCOATED PAPER



**no shiny coating*

Greasy and food-soiled paper are ok

PLANTS AND YARD DEBRIS



Remove candles from Jack o lanterns.
Cut branches into 4' sections no wider than 4" in diameter.

COMPOST TIPS:

- In your kitchen, gather food scraps in a kitchen container, paper bag or compostable bag. Visit cedar-grove.com for a list of accepted compostable bags.
- Empty into your outdoor compost cart once full

