

## YARD + FOOD WASTE

**Yard Waste** Up to 4' long and 4" diameter.



**Food Scraps** Remove and throw away stickers, rubber bands and ties.



**Food-Soiled Paper**



**Compostable Bags**

Only brands listed on Green Blenz's website ([greenblenz.com/materials](http://greenblenz.com/materials)) are accepted.



**KEEP OUT of Your Yard + Food Waste**



**FREE Kitchen Compost Containers!**

Call 1-800-592-9995 to request a 3-gallon container and compostable bag samples.

## RECYCLING

**Don't bag recycling—place loose in your cart**

**Plastic Bottles** Screw lids back on empty plastic bottles.



Recycle plastics by shape — only **bottles, jugs, tubs and cups** can be recycled.  
**Throw away all other plastic** — even if it has a "recycle symbol!"

**Plastic Tub + Cups**

Throw out snap-on lids.



**Plastic Jugs**

no cap



**Paper + Cardboard**



**Metal Cans + Scrap Metal**

Material must be at least 3 inches wide but no larger than 2'x2' and less than 35lbs. No sharp or greasy parts. No wood, plastic or rubber (pot handles OK).



**Glass Bottles + Jars**



**Metal Lids**



**Recycle at the Curb**



Call to schedule free pick-up and place next to your cart on collection day: 1-800-592-9995

- **Motor oil** in a transparent, 1-gallon jug with name and address (limit 2 gallons/week)
- **Clothing and linens** in a secure plastic bag labeled "textiles"

## GARBAGE

Throw out all items not accepted in recycling or yard + food waste carts, except hazardous waste (see below).

**Wrappers, Food Packaging + Dirty Items**



**Utensils, Straws + Small Items**



**Other Plastic**



**Diapers, Wipes + Pet Waste**



**Sharp Items**



**Other**



**Cords + Chains**



**Hazardous Waste Disposal**



**Cooking Oil**

Regional cooking oil recycling collectors are no longer accepting cooking oil from residents. Do not pour your cooking oil down the drain as it can clog pipes. Instead carefully pour cooled cooking oil into a water-tight container, seal it and place in the garbage.

## RECYCLING BEYOND THE CART

ITEM	COLLECTION SITES & RESOURCES
Computers Televisions Electronics	<a href="http://ecyclewa.org">ecyclewa.org</a> Free WM curbside pickup may be available. Call 800-592-9995 for information & scheduling.
Plastic Bags	<a href="http://redmond.gov/recycle">redmond.gov/recycle</a>
Batteries (alkaline)	Redmond City Hall entrance 15670 NE 85th Street, Redmond <a href="http://redmond.gov/recycle">redmond.gov/recycle</a> (info about rechargeable batteries)
Medicines	<a href="http://medtakebackwashington.org">medtakebackwashington.org</a>
Fluorescent Bulbs (CFLs) and Tubes	<a href="http://lightrecycle.org">lightrecycle.org</a>
Paint	<a href="http://paintcare.org">paintcare.org</a> (Recycle paint, primer and more at no charge. Visit <a href="http://paintcare.org">paintcare.org</a> for details)
Foam blocks and packaging	<a href="http://redmond.gov/recycle">redmond.gov/recycle</a>
Paper for Shredding	Free city shredding events: <a href="http://redmond.gov/recycle">redmond.gov/recycle</a>
Furniture Appliances	WM may pickup bulky items such as appliances and furniture for a fee. For more information call 800-592-9995. For more pickup and drop-off options visit <a href="http://redmond.gov/recycle">redmond.gov/recycle</a>
Mattresses	<a href="http://redmond.gov/recycle">redmond.gov/recycle</a>

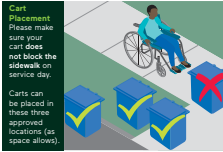
Note: These are not comprehensive lists and do not constitute endorsement by the City of Redmond. Check with each site to verify materials and fees.

## COLLECTION GUIDELINES

Please follow these guidelines to ensure collection.

Please place containers at the curb by 7 am

- Do not place carts where they block sidewalks
- Two (2) feet apart with lids opening toward street
- At least three (3) feet from cars, trees, mailboxes, fences and utility boxes
- Please remove containers as soon as possible after collection



Extra Materials	2025 Rate	Set Out Instructions
Recyclables	No additional cost	Put extra recycling in bag, box or 32-gallon personal can marked "recycling." Flatten and stack all extra cardboard that can't fit into your cart.
Yard Waste	\$4.59 per 32-gallon can/bag	Place in Kraft paper bag or 32-gallon container with lid; label "yard."
Garbage	\$8.45 per 32-gallon can/bag	If your cart lid is open more than 6 inches, there will be a fee for extra garbage.

For more information about service, proper set out and rates visit [wmnorthwest.com/redmond](http://wmnorthwest.com/redmond).

Don't see what you're looking for?



Go to [redmond.gov/recycle](http://redmond.gov/recycle) or call 425.556.2900



## DO MORE WITH MY WM

WM is committed to finding ways to make your service more efficient, effective and effortless to manage. Please create your My WM profile by visiting [wm.com](http://wm.com).

Easily view your collection schedule and stay informed of Service Alerts and schedule changes.

Receive real-time notifications and view images so you are always in the know.

Manage your billing by viewing payment history, changing your payment method or enrolling in AutoPay and Paperless billing.

Download the My WM mobile app to have your service and account information at your fingertips.



## WINTER WEATHER + HOLIDAY COLLECTION

### WM Service and Weather Events

Cold weather is here, and with that comes winter storms. Below are some frequently asked questions about WM service during inclement weather.

### How will I know if my carts are going to be serviced?

WM service alerts for Redmond can be found at <https://servicealerts.wmnorthwest.com/redmond>

### What do I do if my garbage is not collected?

You may put out double loads of garbage, recycling and yard waste at no additional charge on your next regularly scheduled pick-up day.

### Why is my garbage not being collected?

Winter storms can create unsafe and sometimes impassable road conditions that impact WM's ability to safely provide collection service. With safety as the highest priority, the WM operations team inspects every route so that, when it is safe to do so, collection will resume.

### Holiday Garbage, Recycling, and Yard Waste Service Schedule

Garbage, recycling, and yard waste collection are not provided on Thanksgiving Day, Christmas Day, or New Year's Day. Weekday holidays will delay collection by one day for the remainder of the week. For example, if a holiday falls on a Thursday, Thursday customers will be collected on Friday and Friday customers will be collected on Saturday.

For more information, visit [wmnorthwest.com/redmond](http://wmnorthwest.com/redmond)

### Free Curbside Holiday Tree Collection

Those living in homes in Redmond with curbside garbage collection can recycle their holiday tree at no cost. During the first two weeks of January, place unflocked trees up to six feet tall next to your yard waste cart (flocked trees must go in the garbage). After the first two weeks of January, trees must be cut into four-foot, or smaller, segments and placed fully inside your yard waste cart to be collected at no additional cost.

PRSRIT STD  
U.S. POSTAGE  
**PAID**  
TACOMA, WA  
PERMIT NO. 572



WM  
720 4th Ave, Suite 400  
Kirkland, WA 98033

WM Customer Service  
800-592-9995  
Mon-Fri 7 am-7 pm | Sat 9 am-1 pm  
Información en español  
[wmnorthwest.com/redmond](http://wmnorthwest.com/redmond)

Scan to Chat  
with WM Customer Service



Recycling Help  
City of Redmond  
(425) 556-2900  
[redmond.gov/recycle](http://redmond.gov/recycle)  
Additional Information  
Scan for Redmond Garbage, Recycling  
and Compost Resources



#675-REDMOND-SERVICE-GUIDE-2025 © printed on 100% post-consumer recycled paper



# City of Redmond

Service Guide 2025



2025 Redmond Service Guide

Save for reference  
100% post-consumer  
recycled content