



1440 Port of Tacoma Road, Tacoma, WA 98421  
[wmnorthwest.com/jmkfibers](http://wmnorthwest.com/jmkfibers)

## WM JMK Fibers Recycling Facility

### About our operation

The largest recycler in North America is now using artificial intelligence (AI) to improve recycling in Western Washington. Technology upgrades at JMK—WM's regional recycling facility in Tacoma—have the potential to help drive greater efficiency and allow WM to process more types of recyclable material.

WM JMK Fibers Recycling Facility is a state-of-the-art recycling facility located at the Port of Tacoma, a transportation and logistics hub. JMK has on-site rail capacity, along with 24 shipping and receiving docks. Just two miles from I-5, the facility is also conveniently located to send processed materials to end markets via long haul trucks.

### Recycling Today, For Tomorrow®

The use of advanced recycling technology and AI-powered robotics has helped WM increase capacity for material processing. The intended result of WM's technology investment at JMK is less waste and more recyclables that can be used for new products.

After recyclable materials are processed, sorted and baled at JMK, they can be used to create WM driver uniforms, curbside recycling bins and everyday items like cereal boxes and soda cans.

WM invested more than \$12 million to upgrade JMK. Across North America, WM plans to invest more than \$1.4 billion to build or upgrade 39 automated recycling facilities by the end of 2026.

### Media contact

**Patrick McCarthy**  
[pmccart2@wm.com](mailto:pmccart2@wm.com)  
(425) 393-9923



### BY THE NUMBERS

- ✓ **\$12M** investment
- ✓ **125,000** tons of recyclables processed annually
- ✓ **8** AI-powered optical sorters
- ✓ **4** AI-powered robots
- ✓ **120** high-speed conveyor belts
- ✓ **90,000** square feet
- ✓ **60** employees

### TECHNOLOGY SPOTLIGHT

Rotating disks



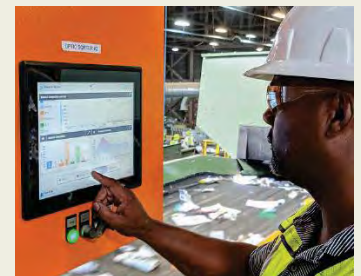
Conveyor belt network



Magnets



Optical sorters



Robotics



Automated balers





## WM in Washington: Providing comprehensive environmental solutions

WM is a leading recycling solutions provider in Washington. The upgraded WM JMK Fibers Recycling Facility uses an intricate network of conveyor belts and AI. At JMK and two other high-tech recycling facilities, WM uses state-of-the-art technology to drive efficiency and versatility.

✔ **3** regional recycling facilities statewide

✔ **300,000** tons of recyclable material processed annually by WM in Washington<sup>1</sup>



### Building circular solutions to help communities thrive

As the largest recycler in North America, WM continues to build its expansive network and leverage advanced technology to support WM's goal of increasing the amount of material recovered annually to 25 million tons by 2030. WM's growing network across North America includes:

✔ **105** recycling facilities

✔ **16M** tons of material recovered in 2024<sup>2</sup>

✔ **49** organics processing facilities

✔ **3.8M** tons of mixed organics processed in 2024

### Recycle Right®

The success of local recycling programs starts with what we do at home, school and work. These three simple rules can help each of us do our part for a more sustainable tomorrow.



#### Rule 1

Recycle bottles, cans, paper and cardboard



#### Rule 2

Keep food and liquid out of your recycling



#### Rule 3

No loose plastic bags and no bagged recyclables

<sup>1</sup>Approximation (all data as of June 2025, except where noted)

<sup>2</sup>Includes organics