



City of Kirkland

Multifamily Service Guide | 2026

Guía de servicios multifamiliares | 多户服务指南 | Руководство по обслуживанию многоквартирных домов | Guia de serviço multifamiliar | 다가구 서비스 안내



Recycle *Reciclaje*



Plastic Bottles *Botellas de plástico*



Empty

Screw caps back on empty plastic bottles

Recycle plastics by shape—only **bottles, jugs, tubs, and cups** can be recycled.

Throw away all other plastic—even if it has a “recycle symbol!”

Plastic Tubs + Cups

Contenedores de plástico

No colored party cups



Plastic Jugs

Jarras de plástico



This is too dirty to recycle!



Wash out food & liquid containers before recycling. Throw away dirty items.

Paper + Cardboard *Papel y cartón*



3' x 3' max

No cap

No glitter/foil

Metal Cans + Scrap Metal *Latas de metal y chatarra*

Larger than 3", under 2'x2', less than 35lbs. No sharp or greasy parts. No wood, plastic or rubber (pot handles OK).



Empty

Glass Bottles + Jars

Frascas y botellas de vidrio



No Small Items *Sin artículos pequeños*



Items that are under 3 inches (width or height) are too small to be recycled and are garbage.



DO NOT BAG RECYCLING



No plastic bags
No bolsas de plástico



No plastic clamshells
Sin almejas de plástico



No black plastic trays
No se permiten bandejas de plástico negras

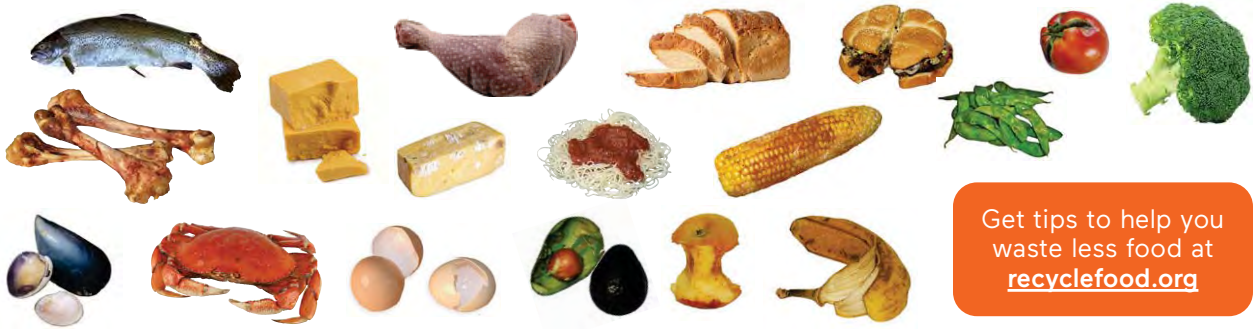
When in doubt, find out! Ask us: (425) 587-3812 or recycle@kirklandwa.gov

Compost Compost



Food Scraps *Restos de comida*

Remove and throw away stickers, rubber bands and ties.



Get tips to help you waste less food at recyclefood.org

Food-Soiled Paper *Papeles con manchas de comida*



No plastic
pizza savers

No shiny
coating

Compostable Bags & Paper Bags *Bolsas compostables y bolsas de papel*



Food scraps can be put into compostable or paper bags. **Compostable bags must be labeled compostable**—biodegradable is not the same. Local providers of compostable bags can be found at wmnorthwest.com/kirkland/yardwaste.html.

Don't put these
in your compost:



PLASTIC BAGS
Bolsas de plástico



POLYSTYRENE FOAM
Poliestireno



GLASS
Vidrio



PRODUCE STICKERS
Producir Pegatinas



PLASTIC
Plástico

Don't have a food scrap cart?

Get free food scrap collection at your apartment or condo:

- ▶ Qualifying properties can receive free food scrap collection service.
- ▶ We can help your property take any steps needed to participate. Property manager or HOA approval is required.
- ▶ To get started, complete our form at kirklandwa.gov/mffoodrequest.

Composting won't work at your complex? Drop off your food scraps.

Place food scraps in the gray carts at our public drop-off locations:

- ▶ Kirkland City Hall (123 5th Ave) loading bay by south entrance
- ▶ North Kirkland Community Center (12421 103rd Ave NE) back parking lot

Follow guidelines above. More info at: kirklandwa.gov/compostdrop.



Garbage *Basura*



Bag all garbage. Throw out all items not accepted in recycling or compost waste carts, except hazardous waste (see *Hazardous Waste* page).

Wrappers, Food Packaging + Dirty Items

Recipientes y cajas de comida



**THESE ITEMS ARE RECYCLABLE,
BUT NOT IN YOUR CART**

See *Recycling Beyond the Cart* on next page.



Drop-off
recycling
available

Utensils, Straws + Small Items

Utensilios de plástico y pajitas



Screw plastic
bottle caps
back on to
recycle

Other Plastic

Otros artículos de plástico



Diapers, Wipes + Pet Waste

Pañales y excrementos de mascotas

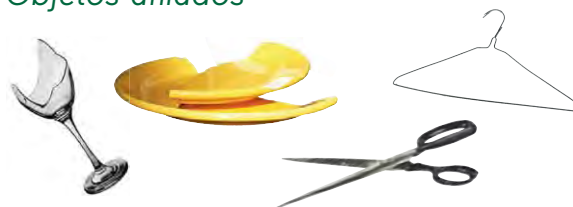


No disposable
wipes are
flushable!

Kitty litter
(double bag)

Sharp Items

Objetos afilados



Other *Otros productos*



Cool ashes
(double bag)

Cords + Chains *Cables y cadenas*



Recycling Beyond the Cart



Electronics

Recycle large TVs, computers, and laptops with E-Cycle Washington. Locations: ecyclewa.org.



Plastic Bags + Wrap

Bundle clean plastic bags, plastic film and wrap, and return to grocery stores. More info at kirklandwa.gov/bagrecycling.



Prescription Medicine

Find secure disposal drop boxes at med-project.org/washington.



Batteries and CFL Bulbs

Drop-off batteries and mercury containing compact fluorescent bulbs at Kirkland City Hall lower lobby. Batteries can also be dropped off at the North Kirkland Community Center and the Peter Kirk Community Center.



Expanded Polystyrene Foam

Bring to foam recycling events. See kirklandwa.gov/styrofoam. Styro Recycle - styrorecycle.com Shoreline Transfer Station - kingcounty.gov/shoreline



Confidential Papers + Shredding

Home shredding is not accepted in your recycle or compost carts. Shred at a free shredding event instead. For more information, visit: kirklandwa.gov/shredding.



Clothing + Textiles

Drop off textiles at Houghton Transfer Station's recycling area.

Goodwill accepts textiles for recycling. More options at kingcounty.gov/threadcycle.



Recycle Electronics

Televisions, Computers + Tablets

Recycle computers, tablets, e-readers, monitors, TVs, and laptops through E-Cycle Washington (ecyclewa.org). In Kirkland, drop off at Pacific Power Batteries or Goodwill.



Consider selling or giving away electronics that still work! Reusing an item saves about 20 times as much energy as recycling it.

Cell Phones

Drop off cell phones for recycling at Goodwill or Kirkland City Hall, 123 5th Avenue.

Find more options at call2recycle.org.



Other Electronics

Electronic equipment can be recycled at our Recycling Collection Events. Find more options at takeitbacknetwork.org.



Hazardous Waste



Drop-off at Factoria Household Hazardous Waste Facility

Safely dispose of hazardous waste for no cost. Visit their website for all accepted materials.

13800 SE 32nd St, Bellevue
Tue-Fri 8-4 | Sat-Sun 9-5
No appointment needed.

kingcountyhazwastewa.gov
haz.waste@kingcounty.gov
(206) 296-4692

Auto Products



Motor oil, oil filters, antifreeze, auto fluids

Fuel



Gasoline, propane and butane tanks, kerosene

Oil-Based Paint + Solvents



Oil-based paint, paint thinner, stains, polish, varnish, solvents, spray paint

Batteries + Fluorescents



Cleaners



Weed/Bug Killer



Is it hazardous?

You can also check the label for these words or symbols:



Do Not Bring

Do not bring asbestos, explosives, or medical sharps to hazardous waste facilities.

Statewide Paint Recycling



This statewide program allows the public to drop off unwanted paint for free recycling. Drop-off locations are located around the state and accept latex and oil-based paint for recycling.

For locations and details of accepted items visit paintcare.org/WA.

Latex Paint Disposal

Stir kitty litter into latex paint to dry it out, then throw it away.

Learn about proper paint cleanup at kirklandwa.gov/paint.



Textile Drop-off Bins

Clothing + Textiles

This program offers large multifamily properties on-site textile collection.

The containers can be located conveniently inside a common indoor space where residents can drop off textiles for donation and recycling.

Once the container is full, the property manager simply calls WM to schedule collection.

Email recyclenw@wm.com to learn more about the WM Textile Recycling carts.



Christmas Tree Recycling

WM collects Christmas trees from your apartment or condo for no charge during the first two weeks of January.

- ▶ Place your Christmas tree next to your garbage dumpster.
- ▶ No taller than 6 feet tall. Taller trees must be cut in 4 feet or shorter segments.
- ▶ Unflocked (without artificial snow or powder) and undecorated.

Pick-ups are made twice a week. To find your pick-up day, visit kirklandwa.gov/recycle.



Need more room to recycle?

Is your recycling always overflowing?

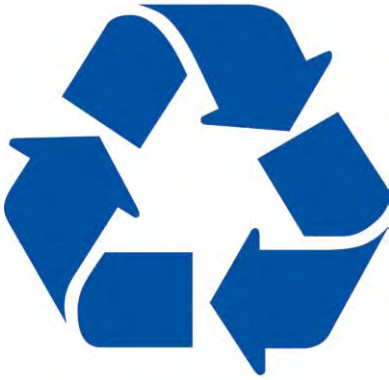
Extra recycling is available at no additional cost.

Contact the Kirkland Recycling Hotline at (425) 587-3812 or recycle@kirklandwa.gov to add recycling capacity at your complex.

Could your complex use a hand with recycling?

Ask your HOA or property manager to contact us for recycling education and resources for residents. See all resources available at kirklandwa.gov/mftoolkit.

Got recycling questions?



Ask us!

Email recycle@kirklandwa.gov
or call (425) 587-3812.

Check our website at kirklandwa.gov/recycle or
use King County's recycling and waste disposal
directory at kingcounty.gov/whatdoidowith.



Email us a photo!

Languages

To request this in other formats or
languages contact (425) 587-3831 or
titlevicoordinator@kirklandwa.gov

Para pedir información sobre
este documento en español,
comuníquese con el coordinador
del Título VI.

如需此文件中信息的简体中文
版本,请发送电子邮件至
titlevicoordinator@kirklandwa.gov
或拨打 (425) 587-3831 联络 Title VI
协调员.

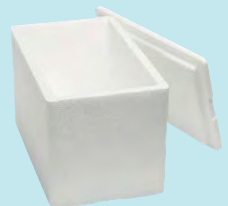
Свяжитесь с координатором
раздела VI, чтобы запросить эту
информацию на русском языке.

Para solicitar informações deste
documento em português, entre
em contato com o Coordenador
do Título VI.

City policy prohibits discrimination
against any person on the basis of
race, color, national origin or sex
in providing benefits and services.

Recycling Events

These items are recyclable, but not in your cart.
Visit kirklandwa.gov/recycle or scan the QR code
below to see upcoming events and
sign up for email event
reminders.



Scan to learn more

WM Customer Service

(425) 587-0040
Mon-Fri 7 am-7 pm | Sat 9 am-1 pm

Información en español
wmnorthwest.com/kirkland

Recycling Questions

Kirkland Recycling Hotline
(425) 587-3812
recycle@kirklandwa.gov
kirklandwa.gov/recycle



Additional Information
Scan for Kirkland
Trash, Recycling, and
Compost Resources

What's inside?

- ▶ Recycle, garbage, + compost guides
- ▶ Drop-off recycling
- ▶ Hazardous waste
- ▶ Christmas tree recycling
- ▶ Recycling Beyond the Cart



WM
7227 NE 55th Avenue
Portland, OR 97218-1215



PSRST STD
U.S. POSTAGE
PAID
TACOMA, WA
PERMIT NO. 572