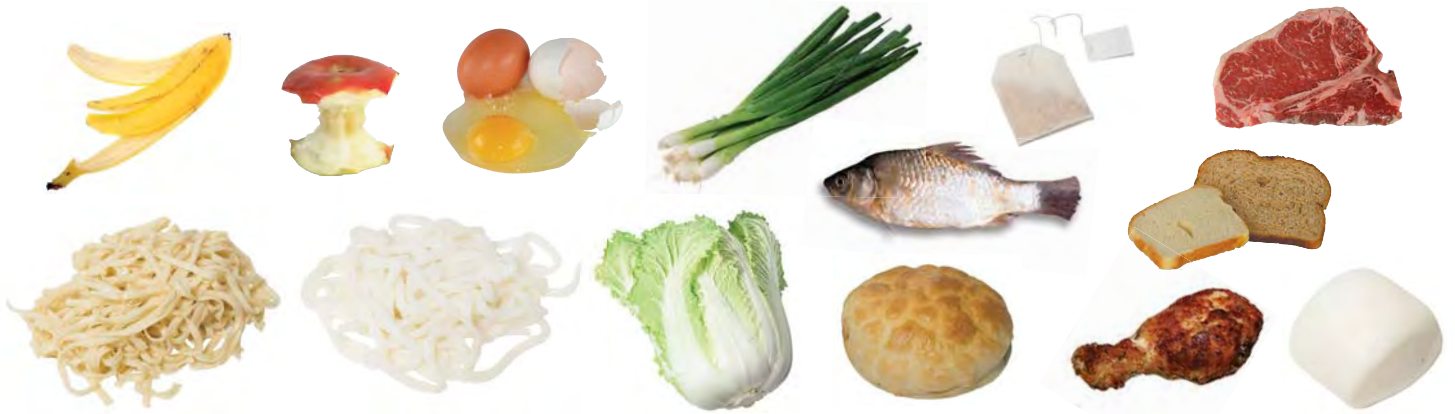


# 堆肥 | 食物、廚餘及庭院碎屑

把這些物品放入你的堆肥箱內



## 食物殘渣和剩菜



## 非鍍層紙張



- 包括:**
- 非鍍層, 無光澤的紙、容器、碟、和盒子
  - 接受沾有食用油或髒的紙製品

## 植物和庭院碎屑



- 包括:**
- 植物、草屑、及雜草  
(拆除塑膠盆、繩、園藝膠帶或紮帶)
  - 樹葉、樹、樹枝、及樹根  
(請切段, 4英尺長, 直徑4英寸以下)
  - 拆除南瓜燈的蠟燭

## 不接受塑膠、玻璃、金屬、液體、食用油或寵物糞便

### 食物回收成堆肥, 簡單環保又省心!

你可以使用以下的容器收集廚餘, 然後再把廚餘放入堆肥箱內。

將收集好的食物殘渣倒入你的堆肥回收箱。堆肥將於下一個回收日被回收。

1



一個新穎的堆肥回收桶

2



一個可再用的廚餘容器, 例如舊的水瓶

3



一個紙袋或認可的堆肥袋

#### 額外的庭院廢物:

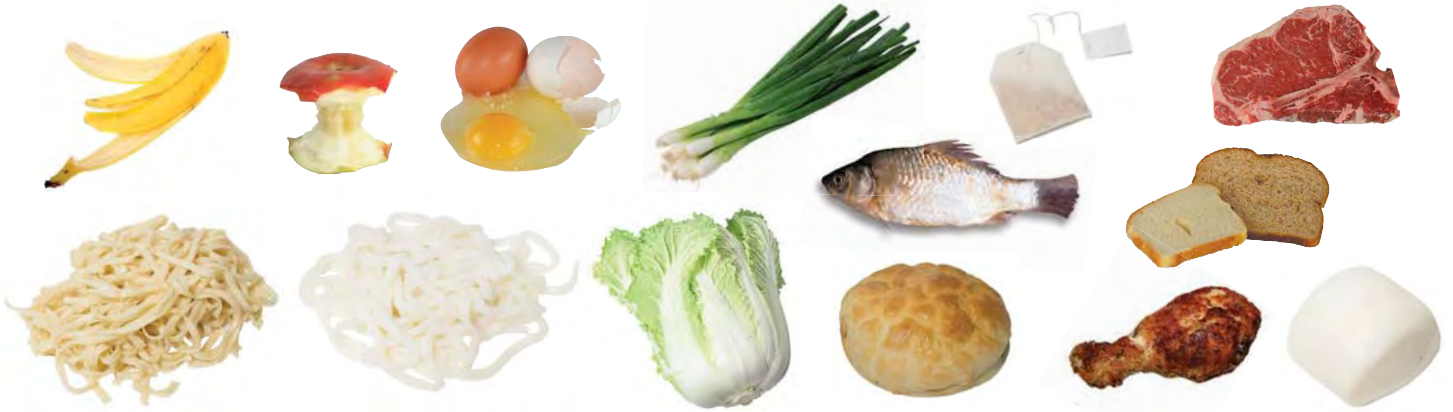
額外的庭院廢物處理將會另外收費。把多於的庭院廢物放入特殊 庭院用的大號牛皮紙袋, 或帶手柄和蓋子的32加侖容器 (限於65磅以下); 然後標記「Yard」(庭院)。只可使用大號牛皮紙袋來盛載多餘的庭院碎屑。食物殘渣和非鍍層紙張必須置於堆肥回收箱內。

# COMPOST | FOOD, KITCHEN SCRAPS, AND YARD WASTE



Put these items into your compost cart.

## FOOD SCRAPS AND LEFTOVERS



## PAPER WITHOUT COATING



### Including:

- Non-coated, no-shine paper, containers, plates, and boxes

Paper items that are dirty or have food grease are allowed

## PLANT AND YARD WASTE



### Including:

- Plants, grass, and weeds  
(Remove plastic pots, rope, tape, or ties)
- Leaves, tree, branches, and roots  
(Please cut into sections: 4 feet long, 4 inches in diameter or less)

Remove candles from Jack-o-lanterns

**PLASTIC, GLASS, METAL, LIQUID, COOKING OIL, OR PET WASTE ARE NOT ALLOWED**

## RECYCLE FOOD TO INTO COMPOST: IT'S EASY, EARTH FRIENDLY AND GUILT-FREE!

You can use the following containers to collect kitchen scraps and then take them to the compost cart.

1



a stylish compost pail

2



a reusable kitchen scrap container, such as an old water pitcher

3



a paper bag or an approved compost bag

Put the collected food scraps into your compost cart. The compost will be retrieved the next collection day.

**Extra garden yard waste:** There is a charge for disposing of extra yard waste. Put the extra yard waste into a special large,

yard-use paper bag, or into a 32-gallon container that has a handle and cover (limit: 65 lbs. or less); and then label it "Yard." Only use the large yard-use paper bags to store extra yard debris. Food scraps and uncoated paper must be placed in the compost cart.